



Healthcare Asset Tracking

Where is the nearest asset?

Do I have enough equipment in that department?

Where is my lost gear? - Am I overstocked?

I need to service this list of devices, where are they?

Asking these questions? You need Elpas Asset Tracking!

The Challenge

The problem of managing patient care assets is challenging healthcare professionals worldwide. Financial managers, operations administrators as well as primary medical providers all agree that keeping track of mobile assets year round, 24-hours a day is essential for organizational performance, patient care, regulatory compliance & legal exposure.

Today's, modern medium-sized, 200-bed facility typically has millions of dollars of owned or leased mission-critical equipment in service. In any corridor, patient care devices ranging from IV pumps, ventilators and x-ray machines to other mobile assets such as wheelchairs, stretchers and gurneys, are either moving from one place to another, or are parked along a wall waiting to go somewhere. Overloaded support personnel, nurses and even doctors, waste time searching and retrieving misplaced and overlooked patient care equipment. Maintenance staff also loses productivity by searching for specific items in need of repair or calibration. Typically, searches are random, unorganized and in some cases may adversely affect patient treatment.

Hundreds of thousands of dollars worth of equipment are unaccounted for each year, it simply gets misplaced, or stolen. Assets are often underutilized or unutilized due to departmental hoarding. To compensate, many healthcare facilities have found it simpler to just over-procure.

With an Elpas Asset Tracking Solution you can use active Radio Frequency Identification (RFID) technology to effectively manage and reduce your asset utilization challenges.

An Elpas Asset Tracking Solution from Visonic Technologies (VT) can help control your ongoing operational expenses plus reduce your yearly capital expenditures.

- ✓ **Lowers acquisition costs**
- ✓ **Reduces lease expenses**
- ✓ **Trims asset shrinkage**
- ✓ **Increases asset utilization**
- ✓ **Boosts staff productivity**
- ✓ **Enhances work flow**
- ✓ **Reduces equipment hoarding**
- ✓ **Advances JCAHO maintenance & calibration compliance**
- ✓ **Cuts risk & litigation exposure**

Ask your VT representative about this high value business proposition today.

How Elpas Asset Tracking Solutions Work

Elpas Asset Tracking solutions consist of a comprehensive set of hardware, software and services customized accordingly to your particular mix of facilities, asset types, and legacy systems. Flexible and robust solutions designed to meet both your current and long-term needs.

The Elpas Asset Tag

The Elpas Asset Tracking Solution is based on the Elpas Asset Tracking tag. When deployed the tag is affixed to the medical devices you want to track.

Only 4 by 3cm (1.5 x 1.18 inches) in size, the Elpas Asset Tracking Tag is suitable for surface mounting on almost any

mobile patient care asset without electrically interfering with its operation.

The tag uses low power beacon type radio signals as well as safe, infra-red transmissions messages to transmit continuously asset identity and location data down to room-level accuracy to a network of Elpas ceiling/wall mounted readers that are placed at strategic points around the facility; such as key



exits, entrances as well as transition points between departments.

When attached to a medical delivery asset; the Elpas Asset Tag can also automatically transmit alerts and trigger alarm notifications for keeping personnel informed of deliberate or accidental tampering and/or removal.

Additionally, Elpas Tracking Tags emit

periodic supervision messages so that a supervision alarm may be triggered should the Elpas system fail to hear from the asset.

Additionally, the tag's onboard magnetic low frequency (LF) Receiver adds exit point area detection so whenever the protected asset is physically near a critical exit/entrance covered by an Elpas reader an alert notification is generated.

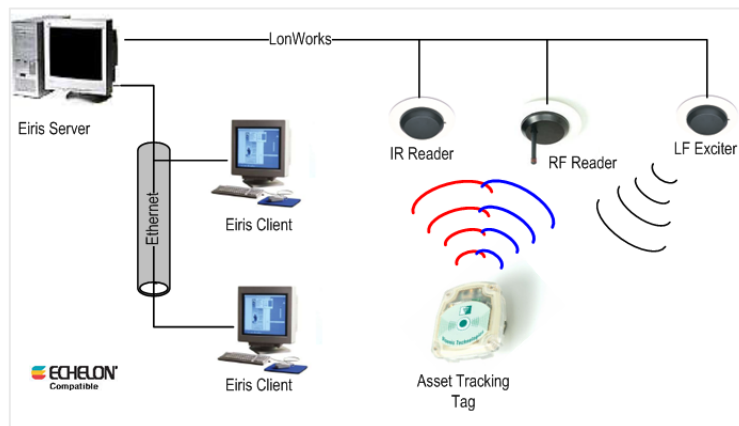
Asset Tag Features

Useful for Tracking:

Infusion pumps
Cardiac Monitors
Ventilators
Wheelchairs & Gurneys
Monitoring equipment

- ✓ Smallest Active Triple-technology RFID tag available
- ✓ Tough; water resistant casing
- ✓ Asset supervision monitoring
- ✓ Tamper/removal alerts
- ✓ Patient safe RF & IR technologies
- ✓ Exit point area alerts
- ✓ Mounts on virtually any device
- ✓ Field replaceable long-life battery
- ✓ CE and FCC approved

Flexible Network Infrastructure



Upon receiving data from the tracking tags, the Elpas readers process and then feed the identification and tracking data over a commercially available Echelon LonWorks™ network to the EIRIS™ NT server for processing, monitoring, database logging and alert notification distribution to desktop/laptop clients or mobile devices.

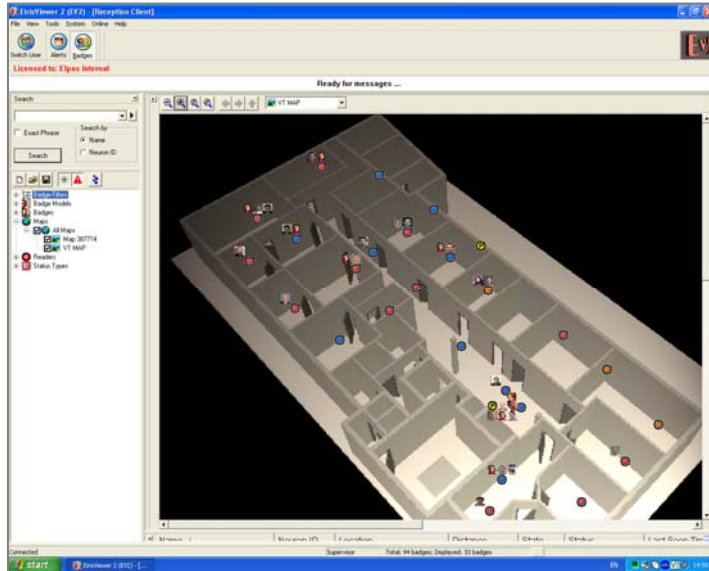
The Elpas network of IR/RF readers and exit point LF exciters can easily scale to support thousands of networked devices and 10s of thousands of asset tags. This scalability is achievable due to the distributed intelligence and routing capabilities available in LON networks. In

addition, thousands of 3rd party sensors and actuators may be added to the network enabling limitless integration possibilities.

The Elpas tracking solution seamlessly integrates with other Elpas RFID security applications for monitoring and tracking personnel and patients as well as mobile assets. The system can be expanded to add active Elpas personnel tags, hands free access control, hands-free asset escorting, panic alarm and more. The same LON infrastructure of Elpas readers, LF exciters, servers, clients and software is used for both asset and personnel tags.

By initially implementing Elpas asset tracking and then adding risk mitigation and security functionality, medical facilities can realize a single unified approach for optimizing asset usage, ensuring patient and caregiver security and enhancing hands-free entrance/exit alerting. Add to this unified RFID platform strategy the ability to integrate with legacy enterprise management platforms (such as, patient care, workflow & staff scheduling, billing, asset maintenance, security and billing systems) makes single unified RFID platforms both technically and financially feasible for the majority of healthcare facilities.

Every Elpas tracking solution is built upon field proven components; flexible robust infrastructure; and inclusive design, implementation and support services.



Rule-based Alerts

Setup, monitor & manage status, location & security rule based alerts and triggered alarms. Monitor all incoming alarms control response and monitor recovery status

Define automatic tasks that can trigger alarms, send commands to external equipment and deliver notifications to different people using email, system clients or mobile devices including mobile phones & PDAs.

Zone/Area History

Produce historical reports and trend information on asset movement and usage within or into or out of any area/zone for specified time periods.

Multilayered Monitoring

Supplies real-time awareness data about what is happening to your patient care assets, organized in one, easy-to-use, multi-layered graphical display.

Intuitive Search Tools

Mouse-driven searches deliver asset location data about any medical care device seen in the graphical display.

Searches may be filtered, enabling you to focus on one asset type or a specific location.

Flexible Location Hierarchy

Elpas asset tracking solutions lets you define your location hierarchy as you see fit.

Elpas', scalable, distributed system architecture supports campuses type facilities; made up of multiple buildings, wings, floors and virtually any other user defined zones.

Simple Backend Integration

Extensible; customized software for integrating with practically any backend management, ERP, workflow, asset maintenance security or billing system.

You can also easily develop enterprise-wide location based services on Elpas' precise real-time, room location data.

Solutions with Real ROI

"Many adopters have reported a rapid return on investment (ROI) of 12 to 18 months."
IDTechEx - Oct 26, 2006.



Simplified Implementation

To help Identify your needs, plan your solution and Implement on schedule. VT professionals along with our Business Partners will work closely with you and your staff every step of the way.

Together, we'll tailor a solution to integrate with your legacy systems and businesses processes, and then assist you through the entire implementation process - arranging for and managing the installation, training personnel in using RFID and handling virtually all other aspects of deployment and startup.

For Information

For more information about Elpas asset tracking solutions contact.

VT World Headquarters

Tel Aviv, Israel
Tel: +972 3 7681400
marketing@visonictech.com

VT Americas

Bloomfield, CT (USA)
Tel: 860-242-0191
vta_marketing@visonictech.com

Visonic Technologies

Beckenham Kent
BR3 9BF England
Tel: +44-870-7300840
vtuk_marketing@visonictech.com

Visonic GmbH

D-40215 Düsseldorf, Germany
Tel: +49-(0)-221-600-696-0
support@visonictech.de

About Visonic Technologies

VT a fully owned subsidiary of Visonic, Ltd. (V.S.C.L), is a global leader in enterprise-class, active and passive RFID/ RTLS real-time visibility solutions for personnel identification and safety; supply-chain logistics, asset protection and facility supervision.

VT's broad world-class technology portfolio delivers systems that improve quality of life, that enhance service delivery, boosts economic ROI and supports location based services.

Visonic Technologies is a complete source for active RFID/RTLS systems, personnel dress and site protection signaling solutions; access control readers & controllers plus unified configuration and management software sold under the Elpas, SpiderAlert, VisAccess and EIRIS system names.